

QuickSee®

Accurate autorefractometry anywhere

COVID-19 and QuickSee: Best practices

Safety recommendations to mitigate the risk of transmission.

Safety recommendations

- Clean QuickSee thoroughly between uses.
- Make sure operator and patient are equipped with appropriate personal protective equipment (PPE); breath masks are compatible with QuickSee.
- Wash hands thoroughly before and after testing.

Cleaning QuickSee

- Alcohol solutions (70% ethanol, isopropanol) and microfiber cloths recommended; consult the FDA's List N for other disinfectants effective against SARS-CoV-2.
- Remove the eyecup to thoroughly clean it and the viewports.
- Do not submerge QuickSee in liquid.
- See the BASIC CARE section of the QuickSee User Manual for more information.

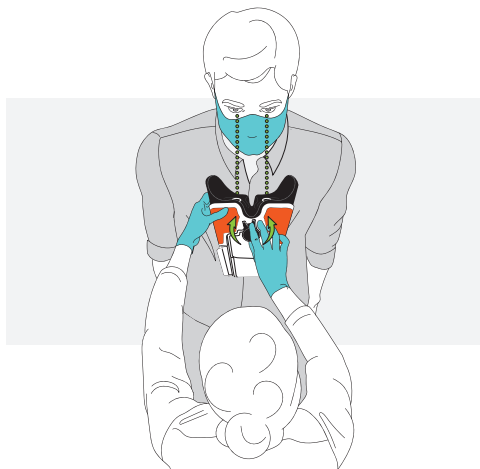
Prevent viewport condensation

Improperly fitted masks can cause condensation on the viewports.

To prevent this, try:

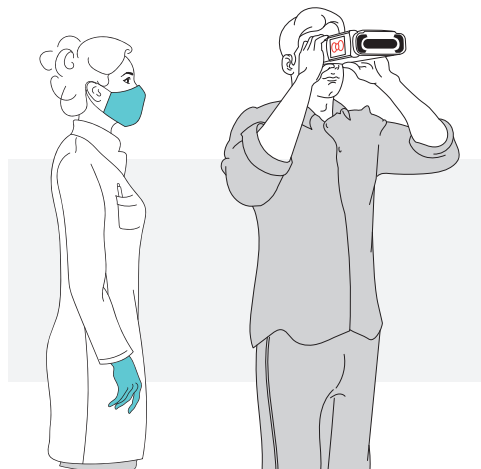
- Firmly closing the metal nose clip in the patient's mask if one is included;
- Pulling the mask over the bridge of the patient's nose so the QuickSee viewport rests on it and seals the mask to their face; or
- Asking the patient to breathe through their mouth during alignment and measurement.

Distance pre-align



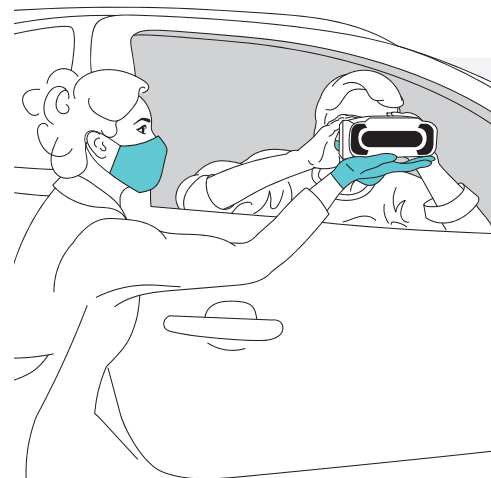
Pre-align the PD while standing at a safe distance from the patient (less than 10 seconds). You will likely underestimate PD, so if alignment is not immediately correct once you put QuickSee to the patient's face, first try widening the PD.

Stand at the side



Use QuickSee while standing at the patient's right shoulder, instead of directly in front of them, thereby reducing direct exposure to one another's breath.

Use anywhere



QuickSee is not sensitive to ambient light, so it works indoors and outdoors. Use QuickSee while the patient is in their car or waiting outside the examination room.

DISCLAIMER

This material is meant as an information piece only; it is not a standard or a Sentinel Event Alert.

June 2020 | ©PlenOptika

MM-SP-001 Rev A